



**CDC-Z107** YH

# SERVICE MANUAL

---

STEREO CAR CD RECEIVER

BASIC CD MECHANISM: TN-CCD1001-113J

---

- Replace this Service manual with "Revision Publishing" when it is issued.

**aiwa**

S/M Code No. 09-002-422-4T2

SIMPLE

DATA

# ELECTRICAL MAIN PARTS LIST - 1/4

NOTE: The characters in the suffix column indicate the part usage.

REF.NO	PARTS NO.	XX KANRI NO.	DESCRIPTION	A SUFFIX
C	642	87-010-196-080	CHIP CAPACITOR,0.1-25	A
C	641	87-010-196-080	CHIP CAPACITOR,0.1-25	A
C	702	87-010-314-080	C-CAP,S 22P-50V	A
C	701	87-010-315-080	C-CAP,S 27P-50 CH	A
C	706	87-010-497-040	CAP,E 4.7-35 GAS	A
C	711	87-010-322-080	C-CAP,S 100P-50 CH	A
C	712	87-010-322-080	C-CAP,S 100P-50 CH	A
C	763	87-010-196-080	CHIP CAPACITOR,0.1-25	A
C	761	87-010-555-040	CAP,E 100-10 GAS	A
C	771	87-012-156-080	C-CAP,S 220P-50 CH	A
D	641	87-070-136-080	ZENER,MTZJ5.1B	A
D	701	87-020-331-080	CHIP-DIODE,DAN202K	A
D	703	87-070-136-080	ZENER,MTZJ5.1B	A
D	714	87-020-331-080	CHIP-DIODE,DAN202K	A
D	712	87-020-331-080	CHIP-DIODE,DAN202K	A
IC	641	88-KT1-606-080	IC,PST994D	A
IC	701	87-A21-535-030	C-IC,LC72358N-9910	A
SW	702	87-A91-152-010	SW,SL 1-1-2 SSSS212-11-A	A
X	701	87-A70-175-010	VIB,XTAL 4.5MHZ AT-49	A
C	208	87-010-176-080	C-CAP,S 680P-50 SL	A
C	203	87-010-178-080	CHIP CAP 1000P	A
C	207	87-010-195-080	C-CAP,S 0.068-25 F	A
C	206	87-010-492-040	CAP,E 0.33-50 GAS	A
C	201	87-010-553-040	CAP,E 47-16 GAS	A
C	202	87-010-553-040	CAP,E 47-16 GAS	A
C	209	87-010-992-080	C-CAP,S 0.047-25 B	A
C	204	87-016-669-080	C-CAP,S 0.1-25 K B	A
C	205	87-A11-606-080	C-CAP,S 0.22-25 K B	A
C	212	87-010-180-080	C-CER 1500P	A
C	215	87-010-182-080	C-CAP,S 2200P-50 B	A
C	218	87-010-198-080	CAP, CHIP 0.022	A
C	211	87-010-498-040	CAP,E 10-16 GAS	A
C	213	87-010-992-080	C-CAP,S 0.047-25 B	A
C	219	87-012-157-080	C-CAP,S 330P-50 CH	A
C	210	87-016-669-080	C-CAP,S 0.1-25 K B	A
C	214	87-016-669-080	C-CAP,S 0.1-25 K B	A
C	217	87-016-669-080	C-CAP,S 0.1-25 K B	A
C	216	87-A11-606-080	C-CAP,S 0.22-25 K B	A
C	223	87-010-067-040	CAP,E 0.1-50 5L	A
C	225	87-010-184-080	CHIP CAPACITOR 3300P(K)	A
C	220	87-010-184-080	CHIP CAPACITOR 3300P(K)	A
C	221	87-010-322-080	C-CAP,S 100P-50 CH	A
C	222	87-010-492-040	CAP,E 0.33-50 GAS	A
C	226	87-010-497-040	CAP,E 4.7-35 GAS	A
C	229	87-010-498-040	CAP,E 10-16 GAS	A
C	224	87-010-553-040	CAP,E 47-16 GAS	A
C	227	87-010-555-040	CAP,E 100-10 GAS	A
C	228	87-016-669-080	C-CAP,S 0.1-25 K B	A
C	236	87-010-067-040	CAP,E 0.1-50 5L	A
C	234	87-010-193-080	CHIP CAPACITOR,0.033	A
C	238	87-010-197-080	CAP, CHIP 0.01 DM	A
C	237	87-010-553-040	CAP,E 47-16 GAS	A
C	233	87-010-555-040	CAP,E 100-10 GAS	A
C	231	87-010-555-040	CAP,E 100-10 GAS	A
C	235	87-010-992-080	C-CAP,S 0.047-25 B	A
C	232	87-016-669-080	C-CAP,S 0.1-25 K B	A
C	230	87-016-669-080	C-CAP,S 0.1-25 K B	A
C	240	87-016-669-080	C-CAP,S 0.1-25 K B	A
C	258	87-010-150-080	C-CAP,S 6P-50 CH	A
C	256	87-010-186-080	CAP,CHIP 4700P	A
C	259	87-010-316-080	C-CAP,S 33P-50 CH	A
C	251	87-010-555-040	CAP,E 100-10 GAS	A
C	250	87-010-805-080	CAP, S 1-16	A
C	254	87-016-669-080	C-CAP,S 0.1-25 K B	A
C	253	87-016-669-080	C-CAP,S 0.1-25 K B	A
C	252	87-016-669-080	C-CAP,S 0.1-25 K B	A
C	269	87-010-180-080	C-CER 1500P	A
C	268	87-010-498-040	CAP,E 10-16 GAS	A
C	267	87-010-498-040	CAP,E 10-16 GAS	A
C	263	87-010-555-040	CAP,E 100-10 GAS	A
C	264	87-010-555-040	CAP,E 100-10 GAS	A
C	261	87-012-156-080	C-CAP,S 220P-50 CH	A
C	266	87-016-669-080	C-CAP,S 0.1-25 K B	A
C	265	87-016-669-080	C-CAP,S 0.1-25 K B	A
C	262	87-016-669-080	C-CAP,S 0.1-25 K B	A
C	272	87-010-154-080	CAP CHIP 10P	A
C	271	87-010-154-080	CAP CHIP 10P	A
C	270	87-010-180-080	C-CER 1500P	A
C	281	87-010-555-040	CAP,E 100-10 GAS	A
C	282	87-016-669-080	C-CAP,S 0.1-25 K B	A
C	280	87-A10-189-040	CAP,E 220-10	A

# ELECTRICAL MAIN PARTS LIST - 2/4

CON	201	87-A60-859-010	CONN,12P TKC-F12X-K1	A
CON	202	87-A60-860-010	CONN,14P TKC-F14X-K1	A
IC	201	87-A20-446-010	C-IC,LA9241ML	A
IC	202	87-A21-319-010	C-IC,LC78622NE	A
IC	203	87-A21-488-040	C-IC,LA6556	A
Q	205	87-026-210-080	CHIP-TR,DTC144EK	A
Q	204	87-026-210-080	CHIP-TR,DTC144EK	A
Q	202	87-026-210-080	CHIP-TR,DTC144EK	A
Q	203	87-026-210-080	CHIP-TR,DTC144EK	A
Q	201	87-A30-289-040	C-TR,2SA1037AK(R)	A
Q	207	87-A30-299-080	TR,2SB1326	A
Q	206	89-324-122-080	TR,2SC2412K	A
R	242	87-022-371-080	C-RES,S 330K-1/10W F	A
R	241	87-022-371-080	C-RES,S 330K-1/10W F	A
X	201	81-592-641-010	VIB,CER 16.93MHZ	A
C	101	87-010-178-080	CHIP CAP 1000P	A
C	102	87-010-197-080	CAP,CHIP 0.01 DM	A
C	108	87-010-322-080	C-CAP,S 100P-50 CH	A
C	106	87-010-322-080	C-CAP,S 100P-50 CH	A
C	103	87-010-495-040	CAP,E 2.2-50 GAS	A
C	107	87-010-552-040	CAP,E 22-16 GAS	A
C	109	87-010-553-040	CAP,E 47-16 GAS	A
C	112	87-010-185-080	C-CAP,S 3900P-50 B	A
C	115	87-010-196-080	CHIP CAPACITOR,0.1-25	A
C	116	87-010-196-080	CHIP CAPACITOR,0.1-25	A
C	113	87-010-197-080	CAP,CHIP 0.01 DM	A
C	114	87-010-197-080	CAP,CHIP 0.01 DM	A
C	110	87-010-198-080	CAP,CHIP 0.022	A
C	111	87-010-553-040	CAP,E 47-16 GAS	A
C	131	87-010-220-080	C-CAP,S 0.018-25 B	A
C	132	87-010-220-080	C-CAP,S 0.018-25 B	A
C	133	87-012-358-080	C-CAP,S 0.47-10 F Z	A
C	134	87-012-358-080	C-CAP,S 0.47-10 F Z	A
C	132	87-012-365-080	C-CAP,S 0.027-25VBK	A
C	131	87-012-365-080	C-CAP,S 0.027-25VBK	A
C	161	87-010-196-080	CHIP CAPACITOR,0.1-25	A
C	176	87-010-197-080	CAP,CHIP 0.01 DM	A
C	173	87-010-322-080	C-CAP,S 100P-50 CH	A
D	101	87-A40-250-080	C-DIODE,DAN217	A
L	101	87-003-143-080	COIL 4.7 UH	A
L	102	8Z-KT1-619-010	COIL,68MH K7-D	A
Q	109	87-A30-287-040	C-TR,DTC114TKA	A
Q	107	87-A30-288-040	C-TR,DTC114YKA	A
Q	105	87-A30-289-040	C-TR,2SA1037AK(R)	A
Q	102	89-324-122-080	TR,2SC2412K	A
Q	101	89-324-122-080	TR,2SC2412K	A
Q	106	89-324-122-080	TR,2SC2412K	A
Q	111	87-026-235-080	CHIP-TR,DTC114EK	A
Q	161	87-A30-289-040	C-TR,2SA1037AK(R)	A
TU	101	8A-KC8-621-010	TU UNIT, FAE347-A12	A
C	274	87-010-494-040	CAP,E 1-50 GAS	A
C	273	87-010-494-040	CAP,E 1-50 GAS	A
C	306	87-010-184-080	CHIP CAPACITOR 3300P(K)	A
C	305	87-010-184-080	CHIP CAPACITOR 3300P(K)	A
C	308	87-010-198-080	CAP,CHIP 0.022	A
C	307	87-010-198-080	CAP,CHIP 0.022	A
C	303	87-010-494-040	CAP,E 1-50 GAS	A
C	304	87-010-494-040	CAP,E 1-50 GAS	A
C	302	87-010-498-040	CAP,E 10-16 GAS	A
C	301	87-010-498-040	CAP,E 10-16 GAS	A
C	309	87-010-498-040	CAP,E 10-16 GAS	A
C	316	87-010-498-040	CAP,E 10-16 GAS	A
C	310	87-010-498-040	CAP,E 10-16 GAS	A
C	315	87-010-498-040	CAP,E 10-16 GAS	A
C	314	87-A11-177-080	C-CAP,S 0.15-16 K B	A
C	312	87-A11-177-080	C-CAP,S 0.15-16 K B	A
C	313	87-A11-177-080	C-CAP,S 0.15-16 K B	A
C	311	87-A11-177-080	C-CAP,S 0.15-16 K B	A
C	323	87-010-196-080	CHIP CAPACITOR,0.1-25	A
C	321	87-010-196-080	CHIP CAPACITOR,0.1-25	A
C	324	87-010-498-040	CAP,E 10-16 GAS	A
C	322	87-010-555-040	CAP,E 100-10 GAS	A
C	351	87-010-494-040	CAP,E 1-50 GAS	A
C	353	87-010-494-040	CAP,E 1-50 GAS	A
C	354	87-010-494-040	CAP,E 1-50 GAS	A
C	352	87-010-494-040	CAP,E 1-50 GAS	A
C	453	87-010-498-040	CAP,E 10-16 GAS	A
C	454	87-010-498-040	CAP,E 10-16 GAS	A
C	458	87-012-140-080	CAP 470P	A
C	457	87-012-140-080	CAP 470P	A
C	461	87-005-902-080	C-COIL,S4.7UH K LK2125	A
C	551	87-010-553-040	CAP,E 47-16 GAS	A
C	590	87-010-178-080	CHIP CAP 1000P	A
C	835	87-010-182-080	C-CAP,S 2200P-50 B	A
C	836	87-010-182-080	C-CAP,S 2200P-50 B	A
C	831	87-010-494-040	CAP,E 1-50 GAS	A
C	832	87-010-494-040	CAP,E 1-50 GAS	A

# ELECTRICAL MAIN PARTS LIST - 3/4

D	551	87-020-331-080	CHIP-DIODE,DAN202K	A
IC	301	8Z-KT1-622-010	C-IC,LC75374E	A
L	831	87-003-143-080	COIL 4.7 UH	A
Q	559	87-A30-282-040	C-TR,DTA114TKA	A
Q	553	87-A30-287-040	C-TR,DTC114TKA	A
Q	552	87-A30-287-040	C-TR,DTC114TKA	A
Q	551	87-A30-287-040	C-TR,DTC114TKA	A
Q	554	87-A30-287-040	C-TR,DTC114TKA	A
Q	560	87-A30-287-040	C-TR,DTC114TKA	A
C	365	87-010-175-080	CAP 560P	A
C	366	87-010-175-080	CAP 560P	A
C	367	87-010-175-080	CAP 560P	A
C	368	87-010-175-080	CAP 560P	A
C	361	87-012-358-080	C-CAP,S 0.47-10 F Z	A
C	362	87-012-358-080	C-CAP,S 0.47-10 F Z	A
C	363	87-012-358-080	C-CAP,S 0.47-10 F Z	A
C	364	87-012-358-080	C-CAP,S 0.47-10 F Z	A
C	517	87-010-178-080	CHIP CAP 1000P	A
C	516	87-010-178-080	CHIP CAP 1000P	A
C	512	87-010-196-080	CHIP CAPACITOR,0.1-25	A
C	513	87-010-196-080	CHIP CAPACITOR,0.1-25	A
C	519	87-010-494-040	CAP,E 1-50 GAS	A
C	515	87-010-494-040	CAP,E 1-50 GAS	A
C	514	87-010-553-040	CAP,E 47-16 GAS	A
C	511	8A-KC7-623-000	CAP,E 2200U-16 BT(125C)	A
C	533	87-012-368-080	C-CAP,S 0.1-50 F	A
C	532	87-012-368-080	C-CAP,S 0.1-50 F	A
C	531	87-012-368-080	C-CAP,S 0.1-50 F	A
C	534	87-012-368-080	C-CAP,S 0.1-50 F	A
D	0	87-A40-250-080	C-DIODE,DAN217	A
D	501	87-001-783-080	DIODE,1N4002	A
D	508	87-001-783-080	DIODE,1N4002	A
D	505	87-001-783-080	DIODE,1N4002	A
D	504	87-001-783-080	DIODE,1N4002	A
D	503	87-001-783-080	DIODE,1N4002	A
D	507	87-001-783-080	DIODE,1N4002	A
D	506	87-001-783-080	DIODE,1N4002	A
D	502	87-001-783-080	DIODE,1N4002	A
IC	501	87-A21-562-010	IC,LA4743B	A
		8Z-KC1-621-010	FUSE,15A 32V	A
C	612	87-010-198-080	CAP,CHIP 0.022	A
C	611	87-010-553-040	CAP,E 47-16 GAS	A
C	613	87-016-044-040	CAP,E 100-16 GAS	A
C	621	87-010-553-040	CAP,E 47-16 GAS	A
C	622	87-010-553-040	CAP,E 47-16 GAS	A
C	671	87-010-198-080	CAP,CHIP 0.022	A
C	674	87-010-198-080	CAP,CHIP 0.022	A
C	673	87-010-553-040	CAP,E 47-16 GAS	A
C	672	87-010-555-040	CAP,E 100-10 GAS	A
C	682	87-010-198-080	CAP,CHIP 0.022	A
C	681	87-010-553-040	CAP,E 47-16 GAS	A
C	881	87-010-182-080	C-CAP,S 2200P-50 B	A
C	883	87-010-182-080	C-CAP,S 2200P-50 B	A
C	884	87-010-182-080	C-CAP,S 2200P-50 B	A
C	882	87-010-182-080	C-CAP,S 2200P-50 B	A
D	611	87-A40-624-080	ZENER,MTZJ10A	A
D	621	87-A40-523-080	ZENER,MTZJ9.1B	A
D	674	87-001-783-080	DIODE,1N4002	A
D	675	87-001-783-080	DIODE,1N4002	A
D	673	87-017-932-080	ZENER,MTJ6.2B	A
D	672	87-020-331-080	CHIP-DIODE,DAN202K	A
D	671	87-020-331-080	CHIP-DIODE,DAN202K	A
D	681	87-A40-624-080	ZENER,MTZJ10A	A
D	881	87-A40-798-010	DIODE,1N5402 (3A/200V)	A
L	671	87-003-149-080	COIL,47UH	A
L	881	8Z-KT1-615-010	FLTR,AMORPHOUS -CHOKE	A
Q	601	87-A30-168-010	TR,2SB1566F	A
Q	602	87-A30-287-040	C-TR,DTC114TKA	A
Q	612	89-324-122-080	TR,2SC2412K	A
Q	623	87-026-235-080	CHIP-TR,DTC114EK	A
Q	622	87-A30-289-040	C-TR,2SA1037AK(R)	A
Q	621	89-423-953-010	TR,2SD2395F	A
Q	671	87-A30-301-080	TR,2SD1862	A
Q	681	89-423-953-010	TR,2SD2395F	A
CON	831	87-A60-912-010	CONN,3P V IMSA-9202B-1	A
CON	881	8Z-KT1-611-010	CONN,16P CAM-B51	A
J	101	8Z-KT1-614-010	ANT,AW-002	A
J	451	87-A61-225-010	JACK,PIN 2P XR-401	A
J	831	85-HRL-623-010	JACK,3.5 ST BLK	A
C	904	87-010-177-080	C-CAP,S 820P-50 SL	A
C	902	87-010-194-080	CAP,CHIP 0.047	A
C	903	87-010-194-080	CAP,CHIP 0.047	A
C	905	87-010-196-080	CHIP CAPACITOR,0.1-25	A
C	901	87-010-805-080	CAP,S 1-16	A
IC	901	87-A21-489-030	C-IC,LC75853NW	A
LCD	901	8A-KCG-612-010	LCD,AKC-16-17AUX	A
LED	951	87-A91-052-080	LED,SEL6227S RED	A

# ELECTRICAL MAIN PARTS LIST - 4/4

LED	953	87-A91-052-080	LED, SEL6227S RED	A.....
LED	952	87-A91-052-080	LED, SEL6227S RED	A.....
LED	963	87-A40-813-040	C-LED, SEC1E01C BLUE	A.....
LED	962	87-A40-813-040	C-LED, SEC1E01C BLUE	A.....
LED	961	87-A40-813-040	C-LED, SEC1E01C BLUE	A.....
PL	901	8Z-KT1-641-010	LAMP, T-3	A.....
PL	902	8Z-KT1-641-010	LAMP, T-3	A.....
Q	964	87-A30-287-040	C-TR, DTC114TKA	A.....
Q	961	87-A30-449-040	C-TR, DTA123YKA	A.....
Q	962	87-A30-449-040	C-TR, DTA123YKA	A.....
Q	963	87-A30-449-040	C-TR, DTA123YKA	A.....
SW	907	87-036-251-080	SW, T CT 6X3.5 160	A.....
SW	904	87-036-251-080	SW, T CT 6X3.5 160	A.....
SW	908	87-036-251-080	SW, T CT 6X3.5 160	A.....
SW	905	87-036-251-080	SW, T CT 6X3.5 160	A.....
SW	903	87-036-251-080	SW, T CT 6X3.5 160	A.....
SW	902	87-036-251-080	SW, T CT 6X3.5 160	A.....
SW	901	87-036-251-080	SW, T CT 6X3.5 160	A.....
SW	906	87-036-251-080	SW, T CT 6X3.5 160	A.....
SW	910	87-036-251-080	SW, T CT 6X3.5 160	A.....
SW	915	87-036-251-080	SW, T CT 6X3.5 160	A.....
SW	916	87-036-251-080	SW, T CT 6X3.5 160	A.....
SW	911	87-036-251-080	SW, T CT 6X3.5 160	A.....
SW	917	87-036-251-080	SW, T CT 6X3.5 160	A.....
SW	914	87-036-251-080	SW, T CT 6X3.5 160	A.....
SW	913	87-036-251-080	SW, T CT 6X3.5 160	A.....
SW	918	87-036-251-080	SW, T CT 6X3.5 160	A.....
SW	921	87-A91-597-010	SW, RTRY SIM-026MT	A.....
SW	971	87-036-251-080	SW, T CT 6X3.5 160	A.....

# MECHANICAL PARTS LIST - 1/1

NOTE: The characters in the suffix column indicate the part usage.

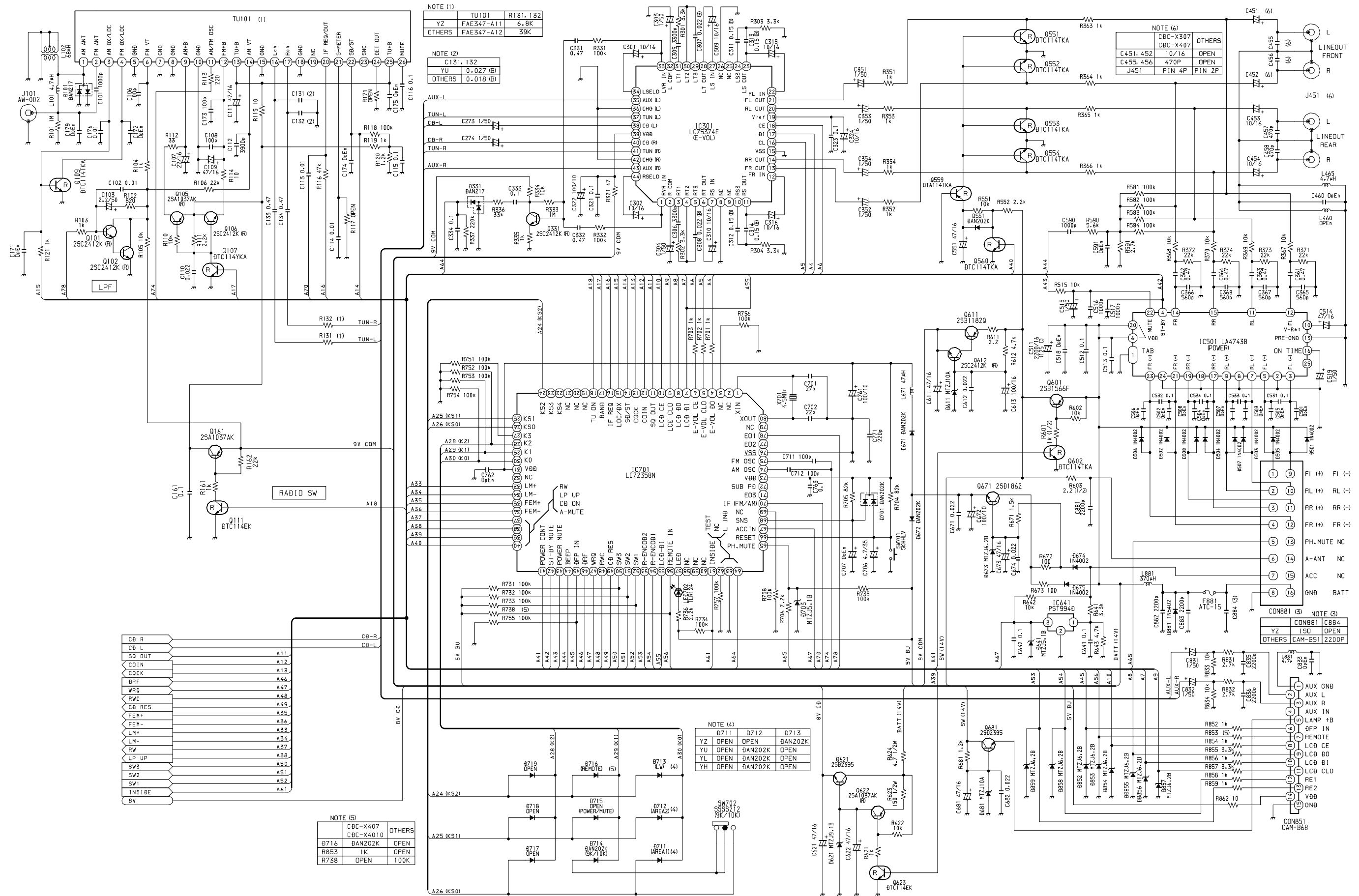
REF.NO	PARTS NO.	XX KANRI NO.	DESCRIPTION	A SUFFIX
YH		XX		A
8A-KCF-021-010			WINDOW, SIDE L -AC15	A
8A-KCF-022-010			WINDOW, SIDE R -AC15	A
8A-KCH-001-010			CABI, FRONT -AC17	A
8A-KCH-003-010			WINDOW, LCD Z107	A
8A-KCH-004-010			WINDOW, LCD Z107 40W	A
8A-KCH-020-010			CABI, TRIM -AC17	A
8A-KC7-005-010			KNOB, RTRY -AC	A
8A-KC7-006-010			BTN, PRE. -AC	A
8A-KC7-007-010			BTN, SEESAW R -AC	A
8A-KC7-011-010			BTN, CLEAR L -AC	A
8A-KC7-013-010			BTN, CLEAR ML -AC	A
8A-KC7-014-010			BTN, CLEAR S -AC	A
8A-KC7-020-010			RING, RTRY -AC	A
8A-KCF-007-010			BTN, SEESAW L -AC15	A
8A-KCF-008-010			BTN, MONO -AC15	A
8A-KCF-010-010			BTN, CLEAR S2 -AC15	A
8A-KCF-012-010			BTN, CLEAR EJ -AC15	A
8A-KC7-208-010			HLDR, BTN L-AC	A
8A-KC7-220-010			SPR-C, ROTARY -AC	A
8A-KC7-224-010			HLDR, P-IC -AC	A
8A-KC7-230-010			HLDR, TR2 -AC	A
8A-KCF-208-010			HLDR, BTN R1 -AC15	A
8A-KCF-209-010			HLDR, BTN R2 -AC15	A
8A-KCF-211-010			LENS, ENCO -AC15	A
8A-KCF-212-010			LENS, R -AC15	A
8A-KCF-213-010			LENS, LCD -AC15	A
8A-KCF-214-010			CASE, LCD LENS -AC15	A
8A-KCF-215-110			HLDR, LCD -AC15	A
8A-KCH-202-010			HLDR, PWB -AC17	A
8A-KCH-219-010			COVER, DUST2	A
8Z-KC1-211-010			COVER, TOP -C	A
8Z-KC1-212-010			COVER, BOTTOM -C	A
8Z-KC1-213-010			CHAS, SIDE L -C	A
8Z-KC1-214-010			CHAS, SIDE R -C	A
8Z-KC3-201-010			COVER, CD BLIND -C	A
8Z-KC7-201-010			COVER, ISO BLIND -C	A
8Z-KT1-239-010			CAP, LAMP BLU B	A
87-251-073-410			SCREW, U+2.6-6	A
87-251-075-410			U+2.6-10	A
87-251-100-410			U+3-16	A
87-432-903-010			WASHER, WTE 2.6	A
87-B10-216-010			U+2.6-4.0 ZINC BLK (BH M2.6)	A
87-B10-259-010			UT2+3.0-10.0 W/O SLOT (BH TAP)	A
8Z-KC1-251-010			S-SCREW, TH2.6-4.0-0.8	A

# ACCESSORIES / PACKAGE LIST - 1/1

NOTE: The characters in the suffix column indicate the part usage.

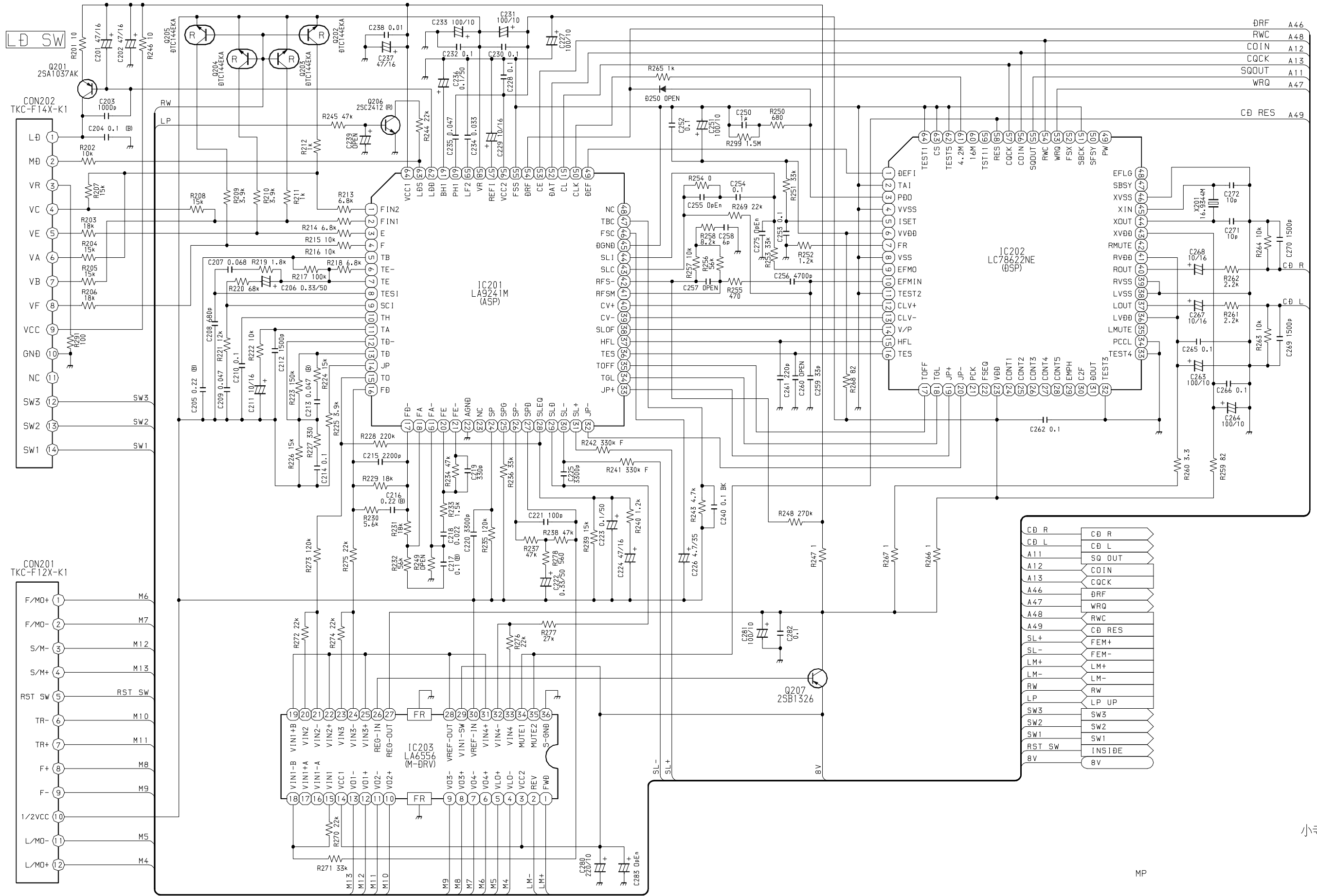
REF.NO	PARTS NO.	NO.	DESCRIPTION	SUFFIX
YH		XX		A
		KANRI		
	8A-KC7-902-010		IB, INST, YU, YL (3L, P)	
	8A-KCG-908-010		IB, INST, YH (E CK CH) -I	A
	8A-KCH-901-010		IB, YU(3L) 107	
	8A-KCH-903-010		IB, YH (E CK CH) 107	A
	87-B10-141-010		NUT, 5 TYPE-2	A
	87-B10-144-010		W, 5.2-10-0.5	A
	87-B10-145-010		W-SPR, 5.3-8.5-1.5	A
	8Z-KC1-231-110		HLDR, HALF -C	A
	8Z-KC1-232-010		KEY, REMOVE -C	A
	8Z-KC1-235-010		HLDR, REAR MTG	A
	8Z-KC1-250-010		S-SCREW, HEXAGON	A
	8Z-KT1-616-010		CONN ASSY, 16P B52	A
*	87-B10-143-010		UT1+5-15 W/O SLOT	A
*	8Z-KC1-244-010		S-SCREW, 5*6 TH+ TAPPING ST	A

SCHEMATIC DIAGRAM - 1 (MAIN: 1 / 2)





SCHEMATIC DIAGRAM - 2 (MAIN: 2 / 2 CD)



- DRF A46
- RWC A48
- COIN A12
- COCK A13
- SQOUT A11
- WRQ A47

- CD RES A49

CD R	CD R
CD L	CD L
A11	SQ OUT
A12	COIN
A13	COCK
A46	DRF
A47	WRQ
A48	RWC
A49	CD RES
SL+	FEM+
SL-	FEM-
LM+	LM+
LM-	LM-
RW	RW
LP	LP UP
SW3	SW3
SW2	SW2
SW1	SW1
RST SW	INSIDE
8V	8V

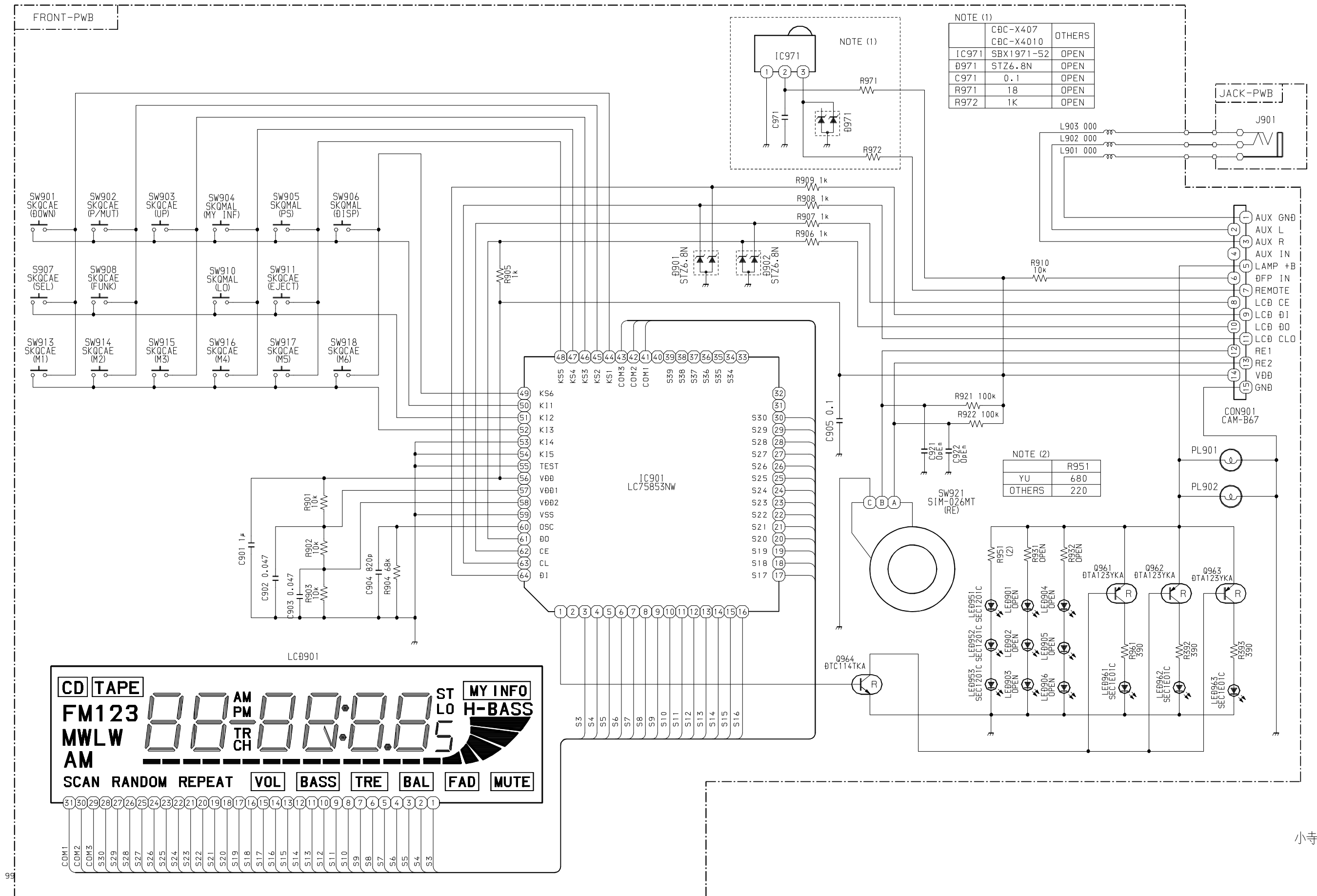
小寺

MP

AKC-16

CBC-X307

SCHEMATIC DIAGRAM - 3 (FRONT)



NOTE (1)

	CBC-X407	OTHERS
IC971	SBX1971-52	OPEN
D971	STZ6.8N	OPEN
C971	0.1	OPEN
R971	18	OPEN
R972	1K	OPEN

NOTE (2)

	R951
YU	680
OTHERS	220

小寺

**アイワ株式会社** 〒110-8710 東京都台東区池之端1-2-11 ☎03(3827)3111 (代表)  
**AIWA CO.,LTD.** 2-11, IKENOHATA 1-CHOME, TAITO-KU, TOKYO 110, JAPAN TEL:03 (3827) 3111