

Service
Service
Service



Philips Consumer Lifestyle

Service Manual

PRODUCT INFORMATION

General:

- Rechargeable
- World-wide automatic voltage selection
- Electronic on/off switch
- Washable

Safety information

- This product meets the requirements regarding interference suppression on radio and TV.
- After the product has been repaired, it should function properly and has to meet the safety requirements as officially laid down at this moment.

TECHNICAL INFORMATION

- Voltage : 100 - 240 Volt / 50 - 60 Hz
- Motor voltage : 1,2 Volt
- Shaving heads : HQ8/3 - 4222 036 15870
- SAP coding : 7310XL

DISASSEMBLY- AND RE-ASSEMBLY ADVICE

Disassembly:

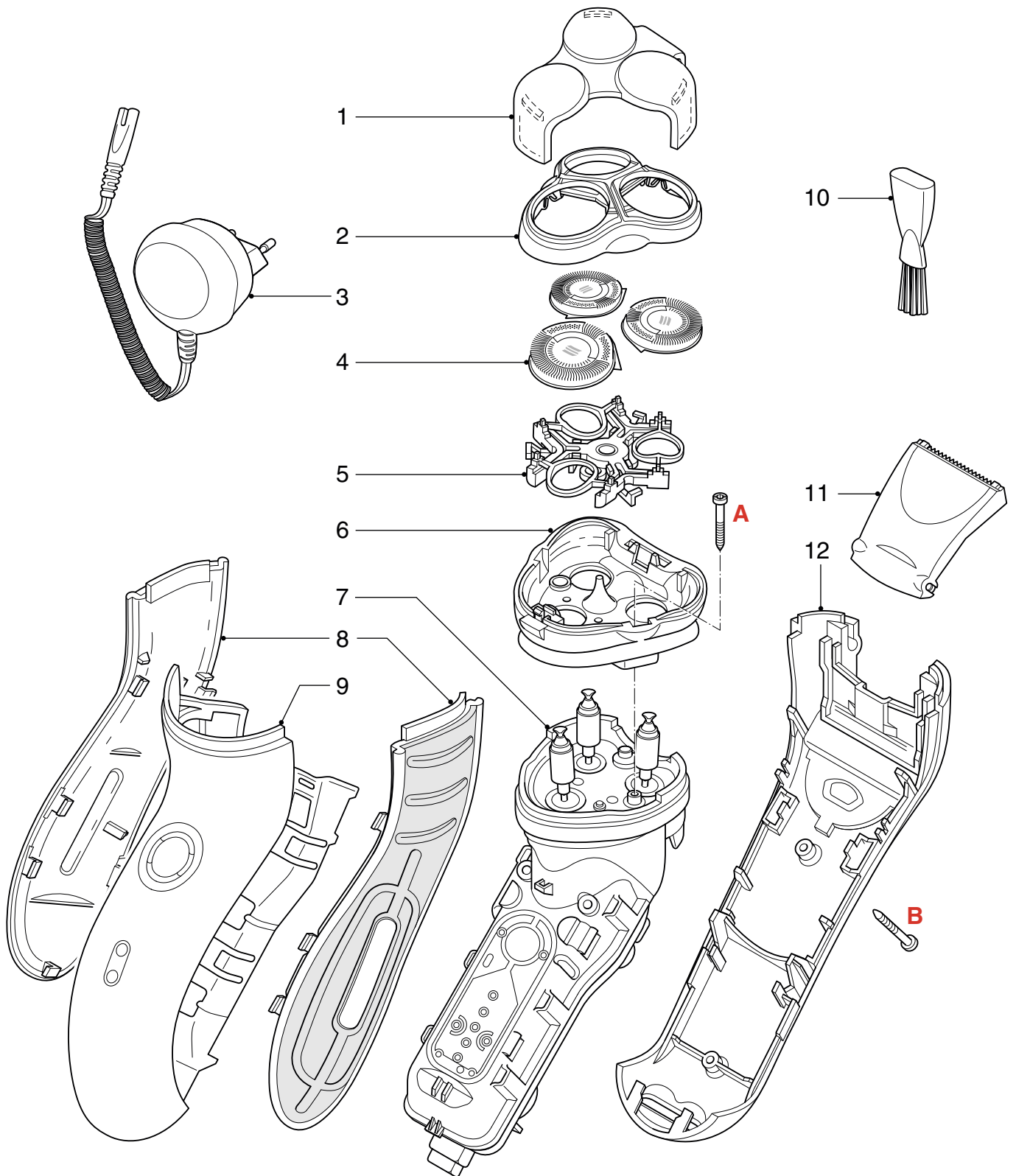
- Remove shaving unit, to prevent damaging during repairing
- Remove the 2 screws (A) out of the hairchamber
- Remove the hairchamber from the body
- Remove the 2 screws (B) on the backside of the shaver
- Remove the cover
- Remove the side grips
- Remove the housing by bending the hooks with a screwdriver
- Take out the basic body

REPAIR INSTRUCTION

- No specific issues

OPTIONAL (accessories)

- Power plug curl.
- | | |
|--------|----------------|
| NOR | 4222 036 06810 |
| Europa | 4222 036 06790 |
| Aus/Nz | 4222 036 04020 |
| GBR | 4222 036 03970 |
| Can/TW | 4222 036 06800 |
| MEX | 4222 036 04030 |
| KOR | 4222 036 04000 |
| JAP | 4222 036 08930 |
| PRC | 4222 036 04040 |
| ARG | 4222 036 03980 |



Pos	Service code	Description
1	4222 036 14050	Protection cap
2	4222 036 15780	Bracket-assy
3	see optional	Power plug
4	4222 036 15870	Shaving heads
5	4222 036 15980	Holder-assy
6	4222 036 14570	Hairchamber
7	4222 036 14100	Basic body

Pos	Service code	Description
8	4222 036 14500	Grip left & right
9	4222 036 16200	Housing-assy
10	4222 036 02770	Brush
11	4222 036 15960	Trimmer assy
12	4222 036 16000	Back shell assy
	4222 036 11480	Screw