

Service
Service
Service



Philips Domestic Appliances and Personal Care

Service Manual

PRODUCT INFORMATION

Shaving system

- Lift & cut system
- Individually floating heads
- Micro + shaving heads
- Silent power
- Hair collecting chamber

Power system

- 2 AA LR6 batteries
- Up to 60 minutes cordless shaving time

Luxe

*

Safety information

- This product meets the requirements regarding interference suppression on radio and TV.
- After the product has been repaired, it should function properly and has to meet the safety requirements as officially laid down at this moment.

TECHNICAL INFORMATION

- Voltage : 3 volt
- Power supply : 2 x AA LR6 battery
- Shaving heads : 2 x HQ4
- SAP coding : HQ40

DISASSEMBLY- AND RE-ASSEMBLY ADVISE

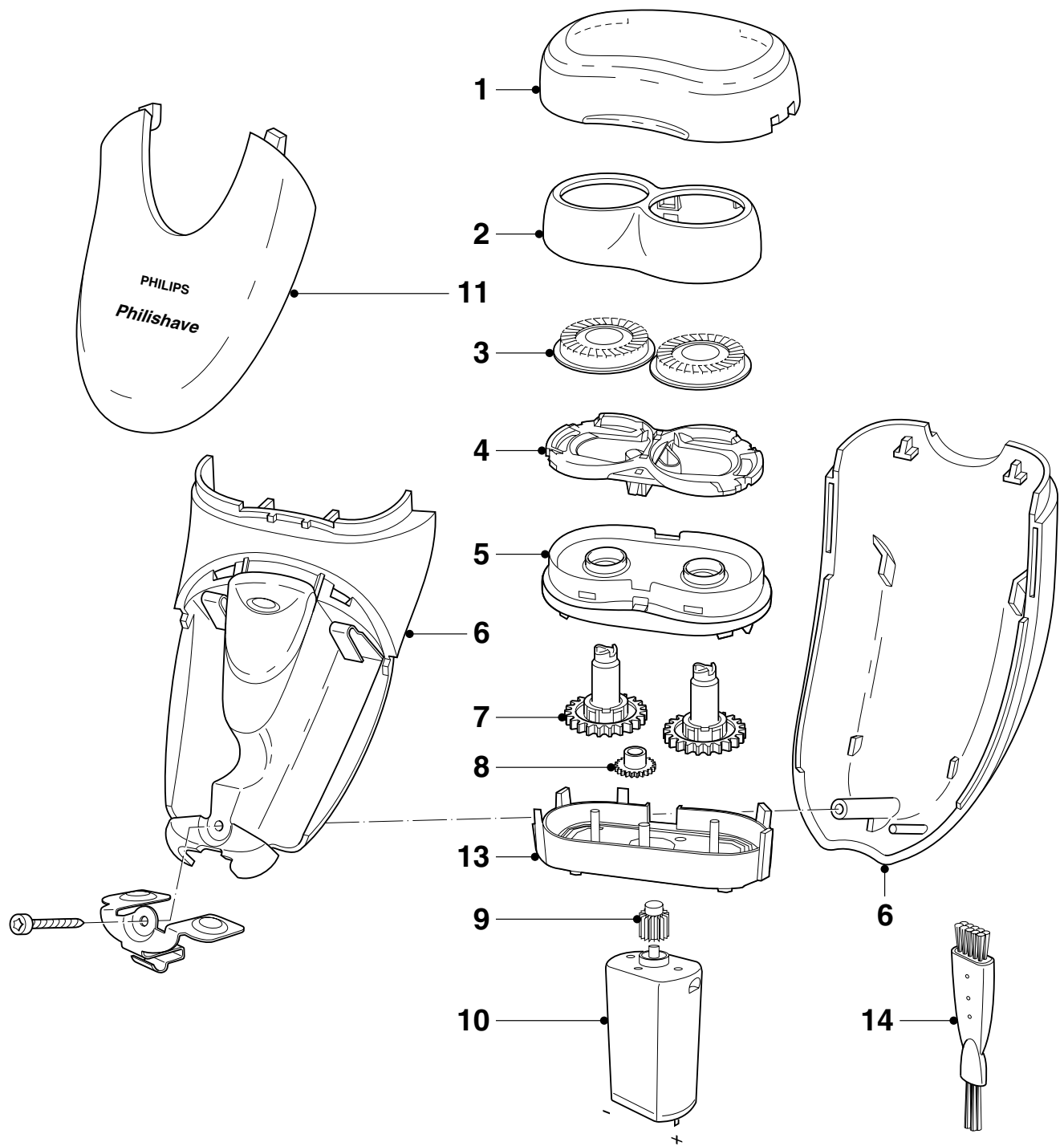
- No specific issues

REPAIR INSTRUCTIONS

- No specific issues

OPTIONAL (accessories)

- No specific issues



Pos	Service code	Description
1	4222 036 09350	protecting cap
2	4222 036 09360	head housing
3	4222 036 05450	shaving heads
4	4222 036 07170	head holder assy
5	not available	hair chamber assy
6	4222 036 09390	housing
7	not available	gear assy

Pos	Service code	Description
8	not available	interm. gearwheel
9	not available	pinion
10	not available	motor assy
11	not available	cover
13	not available	motor frame
14	4822 479 30183	cleaning brush