

Service
Service
Service



Philips Domestic Appliances and Personal Care

Service Manual

SAP Coding HD 7522/16

PRODUCT INFORMATION

Voltage	: 100-110-220 V
Frequency	: 50-60 Hz
Power consumption	: 1100 W
Contents jug	: 1200 cc
Coloursetting	: white / blue
Filter size	: 1 x 4

SERVICE INFORMATION

Thermostat switch-off temp	: 140°C
Thermal fuse cut-off temp	: 228°C

REPAIR INSTRUCTIONS

1. Electrical circuit

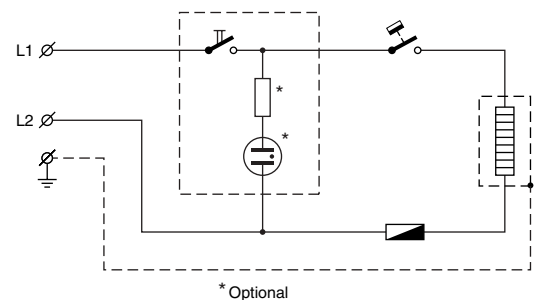
When the appliance does not work, check the electrical circuit. If the thermal fuse or thermostat prove defective, the complete pump unit has to be replaced.

2. De-scaling

If the water system is nearly or less clogged by scale then operate the coffeemaker a few times with vinegar or with a 10-15% solution of either vinegar-acid, citric acid or tartar-acid, into cold tap water.

Do not use other de-scaling agents as these may harm the appliance.

If this procedure does not restore the function, then switch off the coffeemaker when the acid has passed through during appr. 3 min. Keep the appliance in this condition overnight and continue/repeat the cleaning operation. After the de-scaling procedure, operate the coffeemaker twice with tap water in order to rinse away any residual substances.



3. Base removal

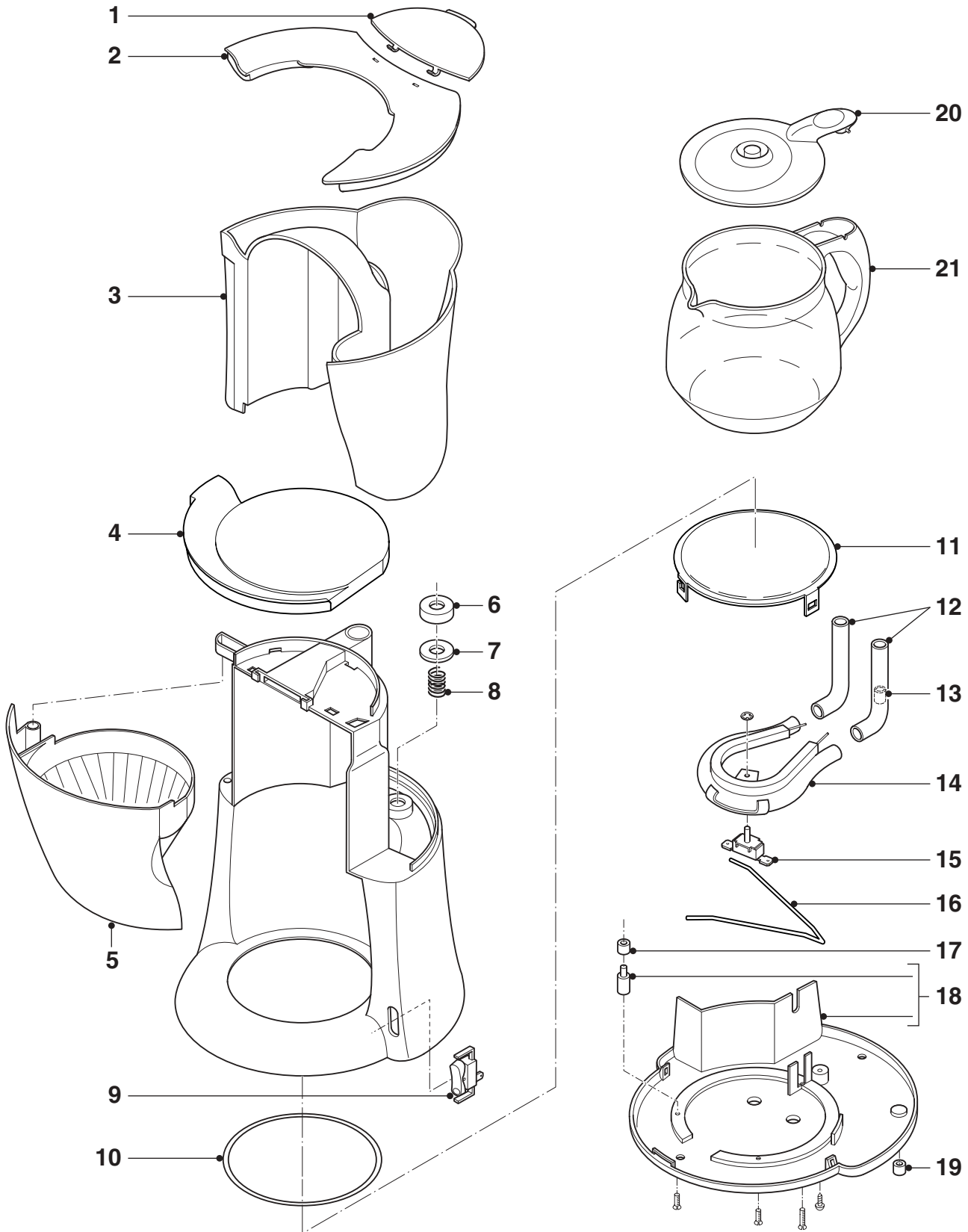
Besides two screws, two plastic snap connections have to be detached by means of using a simple screwdriver, as indicated on the base of the appliance.

Commercial trade number : HD 7964 (Blue handle)

This product meets the requirements regarding interference suppression on radio and TV.

- After the product has been repaired, it should function properly and has to meet the safety requirements as officially laid down at this moment.

HD 7522/16



1	9965 000 09521	Tank lid
2	9965 000 09522	Tank cover
3	9965 000 09523	Tank
4	9965 000 09503	Cover
5	9965 000 09504	Filter
6	9965 000 09505	Seal cover
7	9965 000 09506	Locking plate
8	9965 000 09507	Spring valve
9	9965 000 09524	Switch
10	9965 000 09509	Seal heatingplate

11	9965 000 09510	Heatingplate
12	9965 000 09511	Hose piece
13	9965 000 09512	Valve
14	9965 000 09513	Pump
15	9965 000 09514	Thermostat
16	9965 000 09515	Pump spring
17	9965 000 09516	Hose
18	9965 000 09517	Bottom plate
19	9965 000 09518	Stud
20	9965 000 09519	Jug lid
21	9965 000 09520	Jug