

FIELD REPLACEABLE UNIT DOCUMENTATION

Tecra™

A1 Series

GENERAL INFORMATION

**Tools Required for Proper
Disassembly and Reassembly:**

1. Phillips Screwdriver (Size0&1)
2. 4mm Flat head Screwdriver
3. Case Separator
4. ESD Wrist Strap
5. ESD mats
6. Tweezers

Before attempting any of the following procedures, make sure that the main battery and AC adaptor is not connected to the unit and the environment in which you are working on is protected from Electro-Static Discharge(ESD).

TOSHIBA

Tough Enough for Today's World

FIELD REPLACEABLE UNIT DOCUMENTATION

TecraTM **A1 Series**

TABLE OF CONTENTS:

- 1. BATTERY PACK REMOVAL**
- 2. OPTIONAL PC CARD REMOVAL**
- 3. HDD REMOVAL**
- 4. MEMORY MODULE REMOVAL**
- 5. WIRELESS LAN CARD REMOVAL**
- 6. MODEM BOARD REMOVAL**
- 7. COOLING MODULE REMOVAL**
- 8. CPU REMOVAL**
- 9. KEYBOARD REMOVAL**
- 10. CD-R/W/DVD-ROM REMOVAL**
- 11. TOP COVER REMOVAL**
- 12. TOUCH PAD ASSEMBLY REMOVAL**
- 13. BAT CON HOLDER REMOVAL**
- 14. SYSTEM BOARD REMOVAL**
- 15. 14" DISPLAY MASK REMOVAL**
- 16. FL INVERTER AND 14" LCD REMOVAL**

TOSHIBA

Tough Enough for Today's World

FIELD REPLACEABLE UNIT DOCUMENTATION

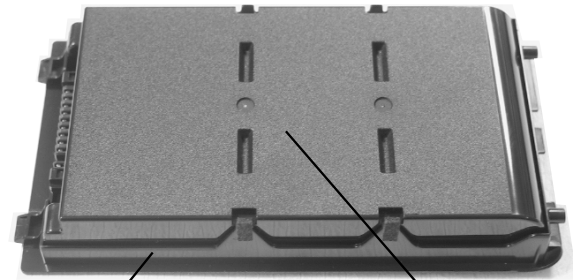
Tecra™ A1 Series

BATTERY PACK REMOVAL



Battery release lever Battery pack assy

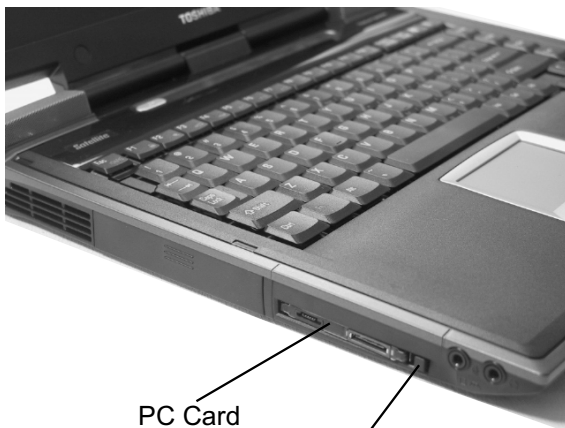
1. Turn the computer upside down as shown.
2. Slide the **battery release lever** in the direction of the arrow.
3. Lift out the **battery pack assy**.



Battery cover Battery pack

4. Separate the battery pack from the battery cover.

OPTIONAL PC CARD REMOVAL

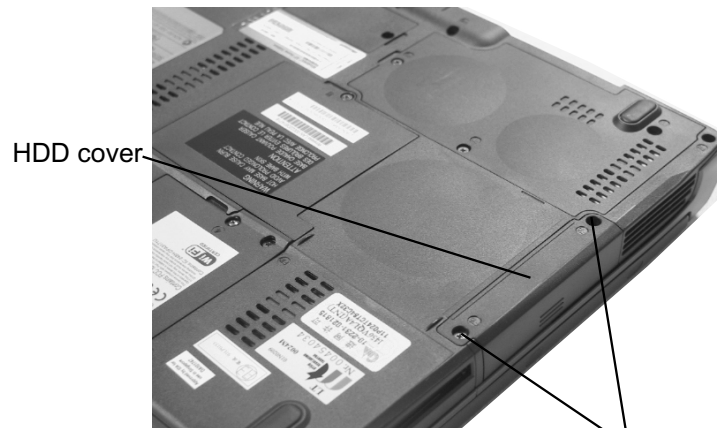


PC Card Eject button

1. Press the **eject button** of the PC Card you want to remove.
2. Press the extended **eject button** to pop the **PC card** out slightly.
3. Grasp the **PC Card** and pull it out

NOTE: Before removing any PCMCIA device, make sure it is "STOPPED" in the PC Card Manager.

HDD REMOVAL



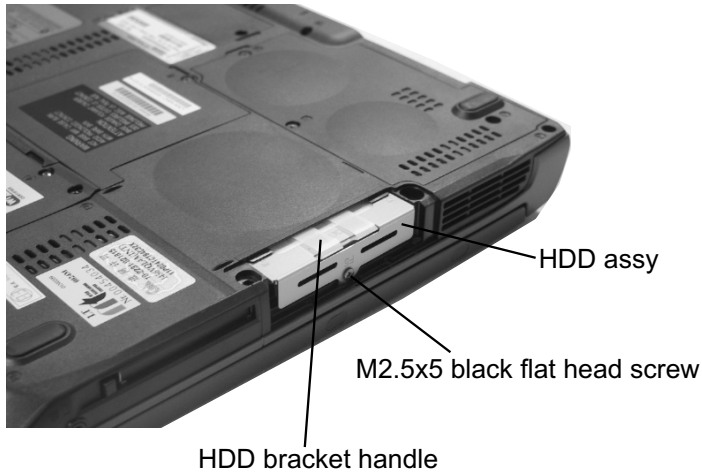
HDD cover M2.5x4 black flat head screw

1. Turn the computer upside down.
2. Remove **two M2.5x16 black flat head screws** securing HDD slot cover and pull out the **cover**.

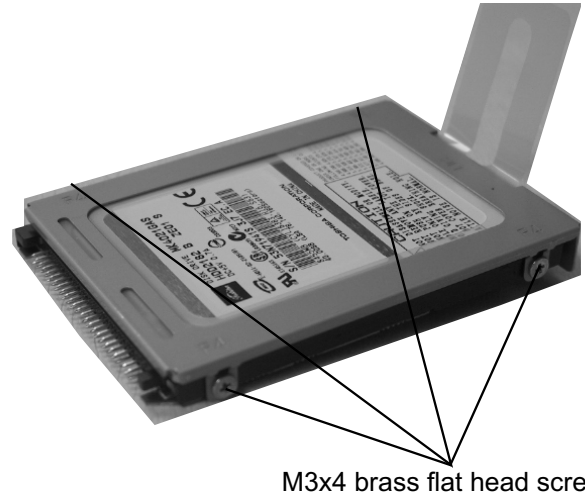
FIELD REPLACEABLE UNIT DOCUMENTATION

Tecra™ A1 Series

HDD REMOVAL

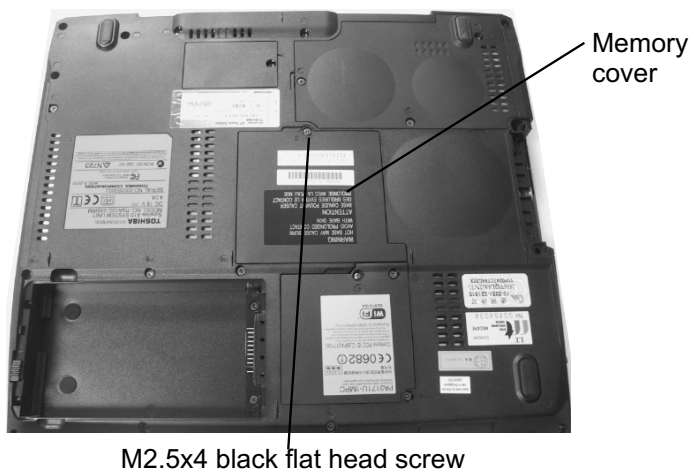


3. Remove **one M2.5x5 black flat head screw** securing the HDD assembly.
4. Grasp the **HDD bracket handle** and pull to disconnect the HDD assembly.
5. Lift the **HDD assembly** out of the HDD bay.

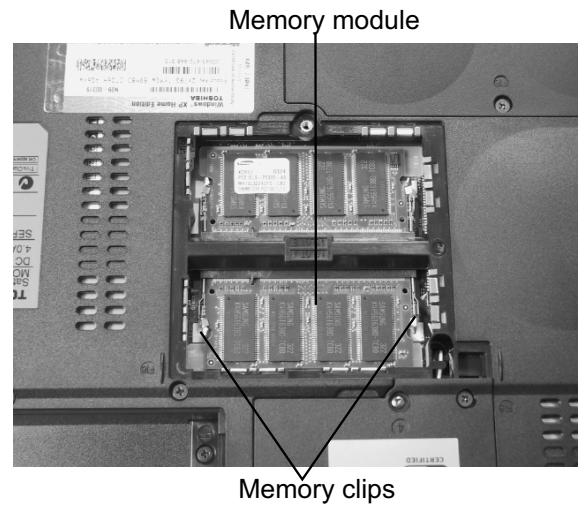


6. Remove **four M3x4 brass flat head screws** securing the HDD bracket to the drive.

MEMORY MODULE REMOVAL



1. Turn the computer upside down.
2. Remove **one M2.5x4 black flat head screw** securing the memory cover.
3. Lift out the **cover**.

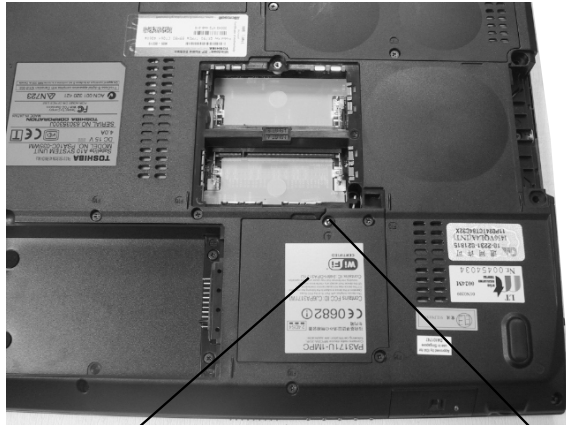


4. Slowly spread out the **memory clips** and pull the memory module out of the connector on a 45 degree angle.

FIELD REPLACEABLE UNIT DOCUMENTATION

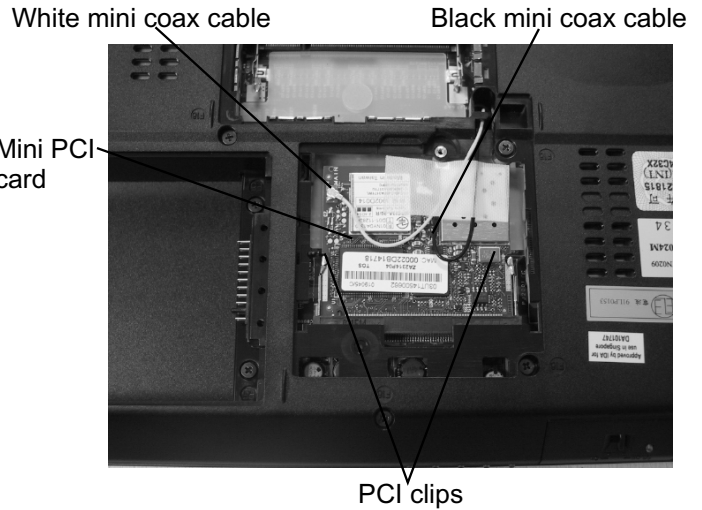
Tecra™ M1 Series

WIRELESS LAN CARD REMOVAL



Mini PCI slot cover M2.5x4 black flat head screw

1. Turn the computer upside down.
2. Remove **one M2.5x4 black flat head screw** securing the Mini PCI slot cover.
3. Lift out the **PCI slot cover**.



4. Peel off the **glass tape** securing the mini coax cables.
5. Disconnect the **white mini coax cable** from main connector and the **black mini coax cable** from aux connector.
6. Gently press out the **Mini PCI slot clips** and pull the **Mini PCI card** out of the connector on a 30 degree angle.

MODEM BOARD REMOVAL



Modem slot cover M2.5x4 black flat head screws

1. Remove **one M2.5x4 black flat head screw** securing the modem slot cover.
2. Insert your finger nail or the case separator into the notched side of the cover and lift up to release the latch securing the modem slot cover.

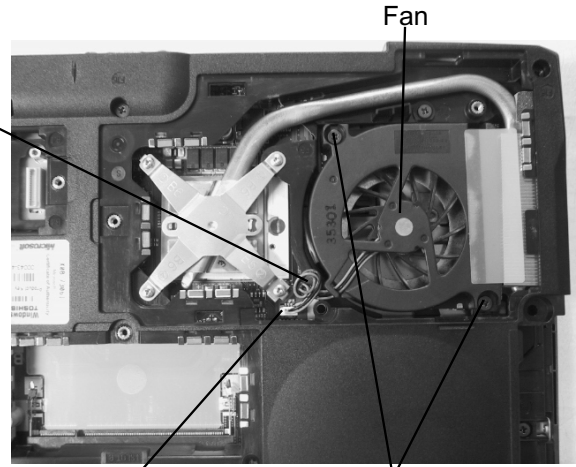
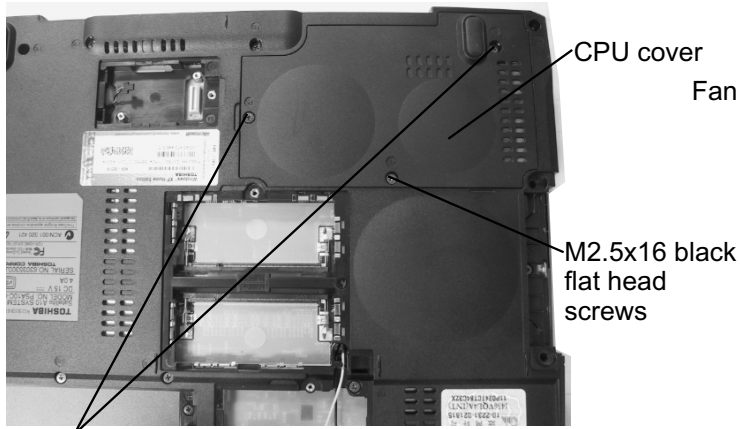


3. Remove **two M2x4 black screws** securing the modem board.
4. Gently lift up the **modem board** to disconnect it from the system board and disconnect the MJ harness from JP1 on the modem board.

FIELD REPLACEABLE UNIT DOCUMENTATION

Tecra™ A1 Series

COOLING MODULE REMOVAL

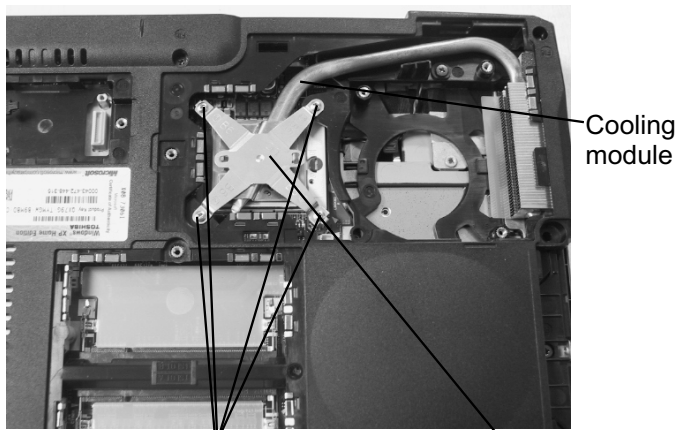


M2.5x5 black flat head screws

1. Turn the computer upside down.
2. Remove **two M2.5x5 black flat head screws** and **one M2.5x16 black flat head screw** securing the modem cover.
3. Remove the **modem cover**.

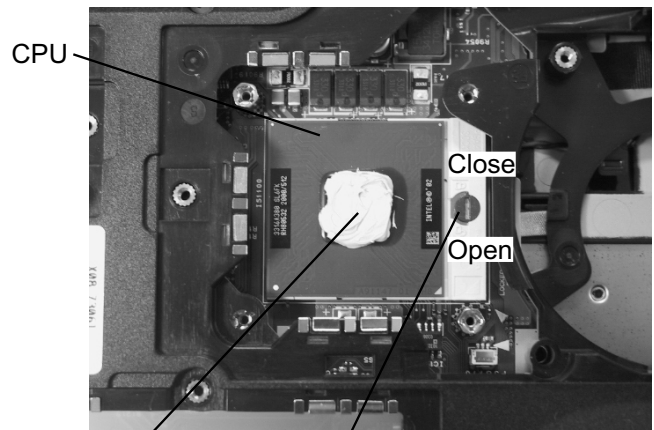
1. Disconnect the **fan cable** from **PJ8770** on the system board.
2. Remove **two M2.5x5 black flat head screws** securing the fan.
3. Lift out the **fan**.

COOLING MODULE REMOVAL



1. Remove **M2x6 brass screws** securing the cooling module brace.
2. Lift out the **cooling module brace**.
3. Lift out the **cooling module**.

CPU REMOVAL



Silicone grease CPU lock

1. Insert a **flat head screwdriver** to the **CPU lock** and rotate it counter-clockwise to unlock the **CPU**.
2. Lift out the **CPU**.

TOSHIBA

Tough Enough for Today's World.

FIELD REPLACEABLE UNIT DOCUMENTATION

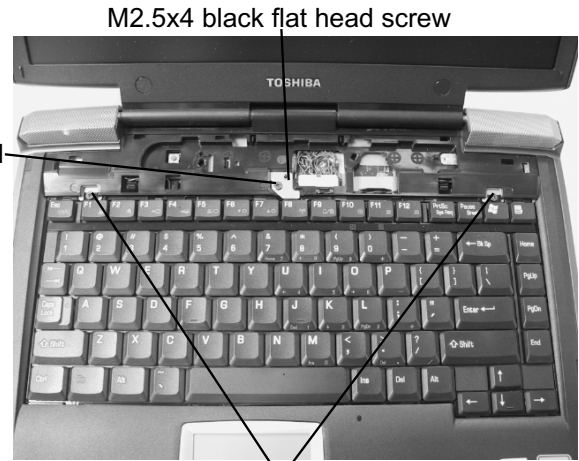
Tecra™ A1 Series

KEYBOARD REMOVAL



Keyboard holder

1. Open the display panel.
2. Using the case separator, unlatch the **keyboard holder** as shown above.



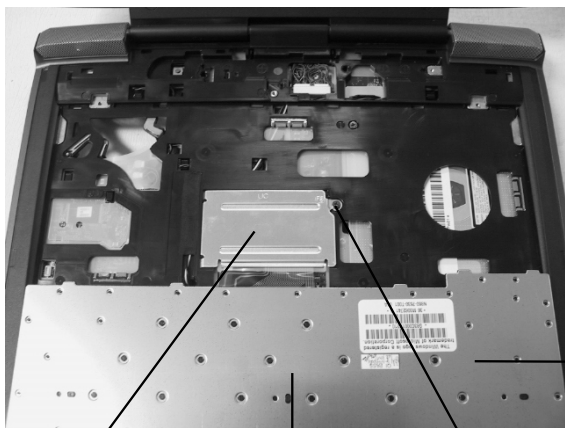
M2.5x4 black flat head screw

Keyboard holder plate

M2.5x2.8 black flat head screws

3. Remove **two M2.5x2.8 black flat head screws** securing the keyboard.
4. Remove **one M2.5x2.8 black flat head screw** securing the keyboard holder plate.
5. Lift out the **keyboard holder plate**.

KEYBOARD REMOVAL



Keyboard

Keyboard support plate

M2.5x8 black flat head screw

6. Lift out the **keyboard** and set it on the palm rest.
7. Remove **one M2.5x8 black flat head screw** securing the keyboard support plate.
8. Lift out the **keyboard support plate**.



Keyboard cable

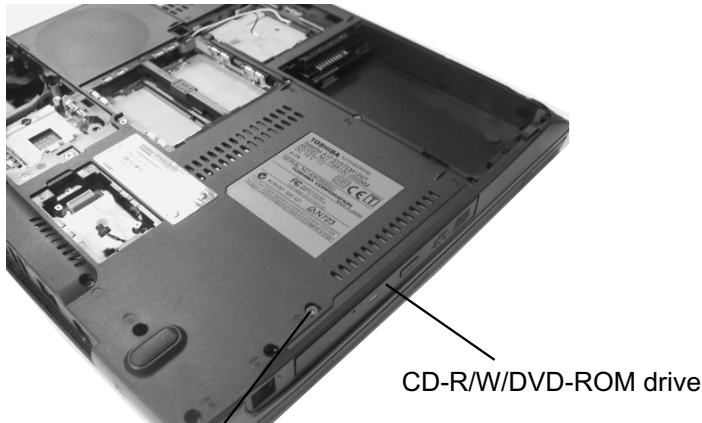
PJ3200

9. Lay the keyboard as shown above.
10. Disconnect the **keyboard cable** from **PJ3200** on the system board.
11. Lift out the **keyboard**.

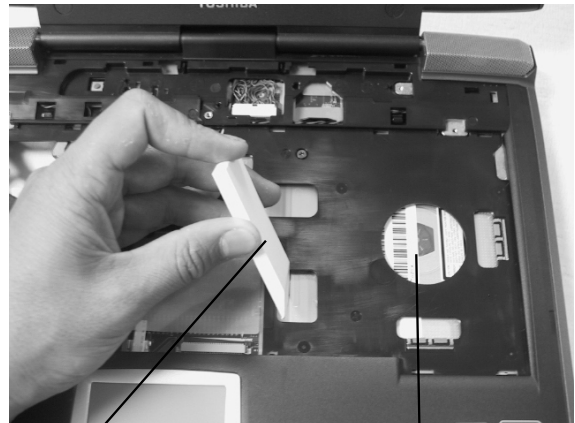
FIELD REPLACEABLE UNIT DOCUMENTATION

Tecra™ A1 Series

CD-R/W/DVD-ROM DRIVE REMOVAL

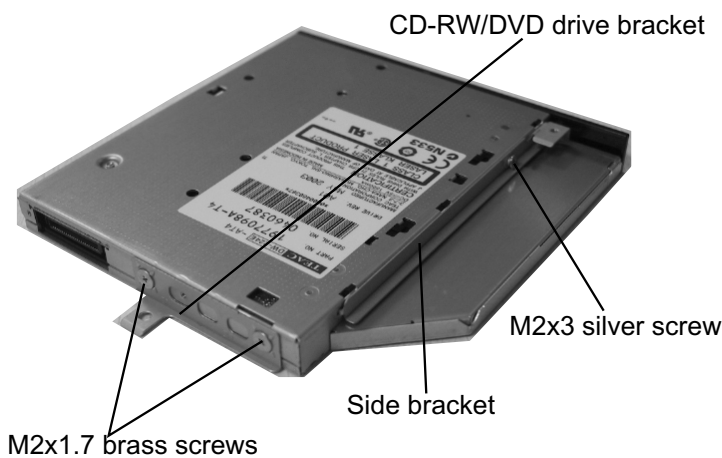


- M2.5x5 black flat head screw
1. Turn the computer upside down.
 2. Remove **one M2.5x5 black flat head screw** securing the **CD-R/W/DVD-ROM drive**.



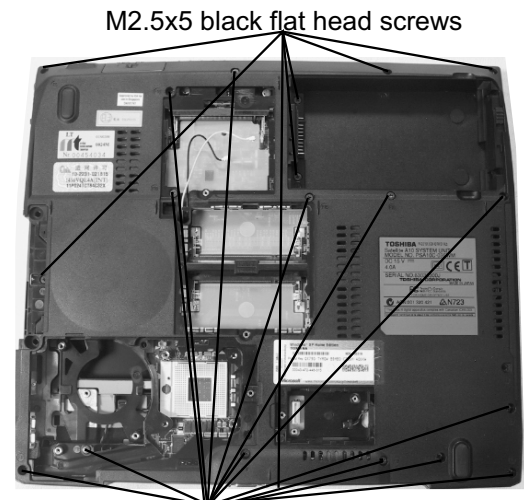
- Case separator
- CD-R/W/DVD-ROM drive
3. Disconnect the **CD-R/W/DVD-ROM drive** by inserting the case separator between the top cover assembly and the drive.
 4. Slide the **CD-R/W/DVD-ROM drive** out of the drive bay.

CD-R/W/DVD-ROM DRIVE REMOVAL



- M2x1.7 brass screws
- CD-RW/DVD drive bracket
- M2x3 silver screw
- Side bracket
5. Remove **two M2x1.7 brass screws** securing the CD-R/W/DVD-ROM drive bracket and lift out the bracket
 6. Remove **one M2x3 silver screw** securing the side bracket and lift out the bracket.

TOP COVER REMOVAL

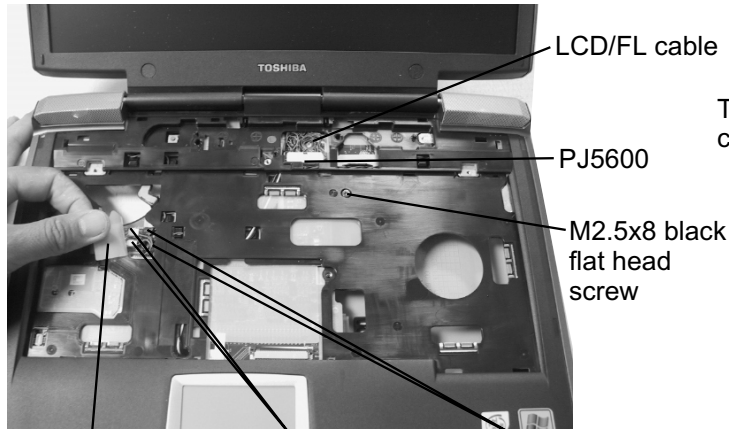


- M2.5x5 black flat head screws
- M2.5x16 black flat head screws
1. Turn the computer upside down and remove the following twenty screws:
 - 7 **M2.5x5 black flat head screws**
 - 13 **M2.5x16 black flat head screws**

FIELD REPLACEABLE UNIT DOCUMENTATION

Tecra™ A1 Series

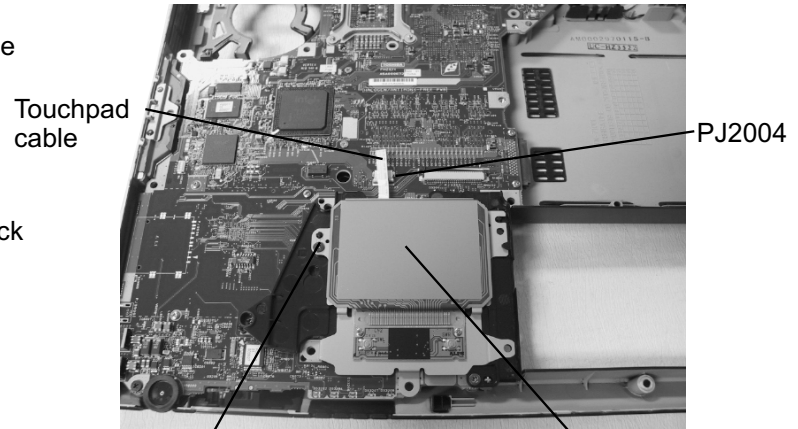
TOP COVER REMOVAL



Plastic insulator PJ6000/PJ6001 Left/Right speaker cables

1. Disconnect the **LCD/FL cable** from **PJ5600** on the system board.
2. Lift up the **plastic insulator** covering the Left/Right speaker cables and disconnect the **Left/Right speaker cables** from **PJ6000/PJ6001**.
3. Remove **one M2.5x8 black flat head screw** securing top cover and lift out the **top cover assembly**.

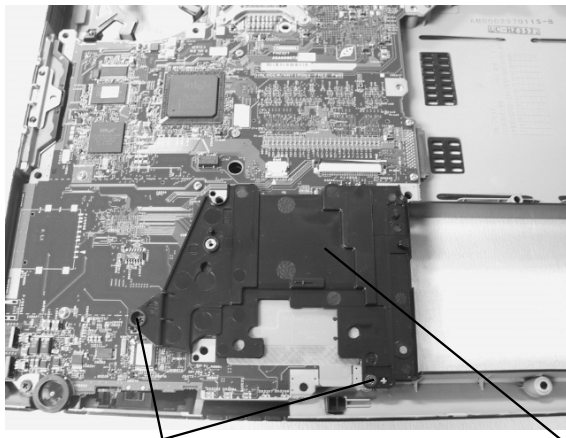
TOUCH PAD ASSEMBLY REMOVAL



M2.5x5 black flat head screw Touch pad assembly

1. Disconnect the **touch pad cable** from **PJ3201** on the system board.
2. Remove **one M2.5x5 black flat head screw** securing the touch pad assembly.
3. Lift out the **touch pad assembly**.

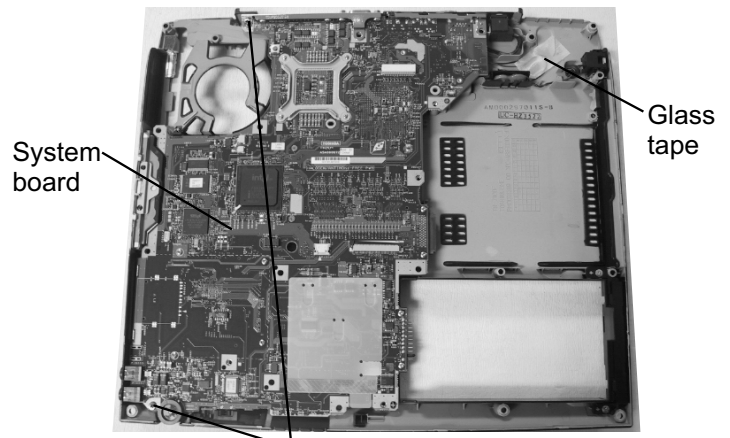
BAT CON HOLDER REMOVAL



M2.5x8 black flat head screws Bat con holder

1. Remove **two M2.5x8 black flat head screw** securing the bat con holder.
2. Lift out the **bat con holder** from the system board.

SYSTEM BOARD REMOVAL



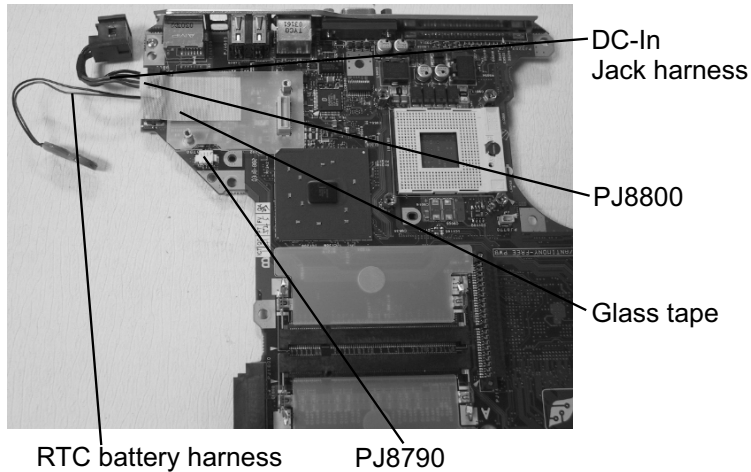
M2.5x5 black flat head screws

1. Peel off the **glass tape** securing the RTC battery cable.
2. Remove **two M2.5x5 black flat head screw** securing the system board.
3. Lift up the **system board** from the right hand side and lift it out.

FIELD REPLACEABLE UNIT DOCUMENTATION

Tecra™ A1 Series

DC-IN JACK/RTC BATTERY REMOVAL

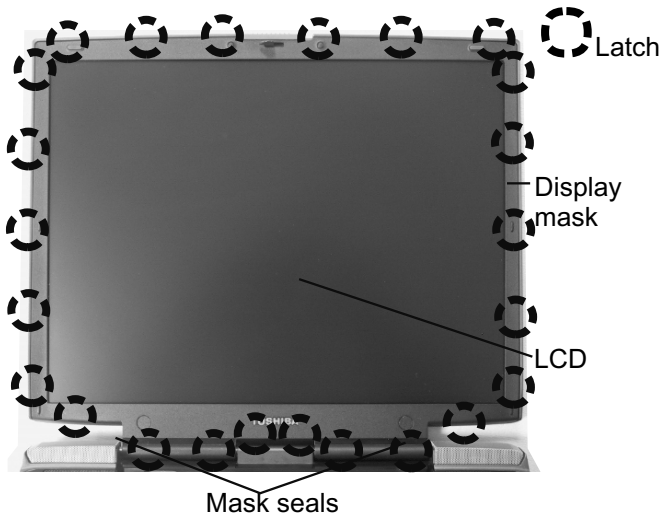


1. Peel off the **glass tape** securing the DC-In jack/ RTC battery harness.
2. Disconnect the **DC-In jack harness** from **PJ8800** on the system board.
3. Disconnect the **RTC battery harness** from **PJ8790** on the system board .

FIELD REPLACEABLE UNIT DOCUMENTATION

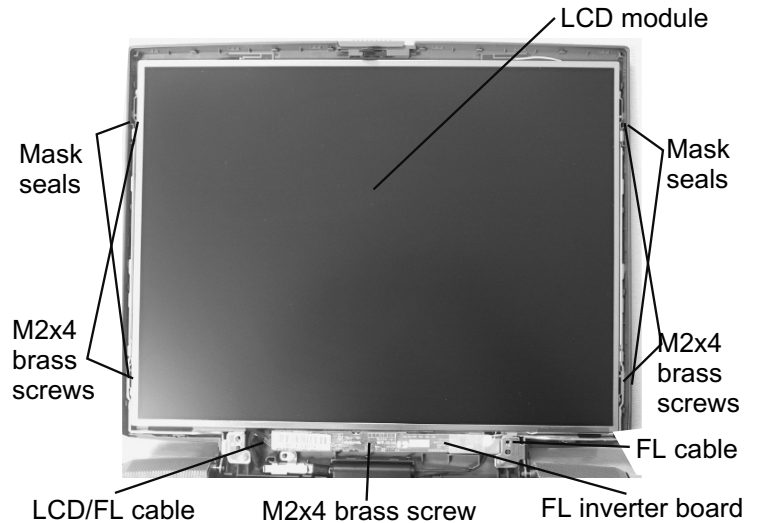
Tecra™ A1 Series

14" DISPLAY MASK REMOVAL



1. Remove **two mask seals** at the bottom corners of the display assembly using a pair of fine-tipped tweezers.
2. Remove **two M2.5x6 black flat head screws** securing the display mask.
3. There are **24 latches** securing the **display mask**. Carefully insert your fingers between the mask and the LCD panel and pry open the latches starting from the **bottom six latches**, to the **five latches on the right and left sides**, ending with the **six top latches**.

FL INVERTER AND 14" LCD REMOVAL



1. Remove **one M2x4 brass flat head screw** securing the FL inverter board.
2. Carefully lift up the **FL inverter board** and disconnect the **LCD/FL cable** from **CN1** and the **FL cable** from **CN2**.
3. Remove **four mask seals** to expose four screws securing the LCD module assembly.
4. Remove **four M2x4 brass flat head screws** securing the LCD module assembly.
5. Carefully rotate out the top of the **LCD module** enough to access the display cable.
6. Peel off the tape securing the LCD/FL cable and disconnect the cable.
7. Remove **four M2x3 silver flat head screws** securing the left/right LCD brackets.